

4048 Ashley Phosphate



- * 4048 Ashley Phosphate Road is a 2,000 square foot one story, office/warehouse building with approximately 756 square feet of office space and 1,244 square feet of warehouse space.
- * The property is situated within Ashley Phosphate Business Park, a small, professional flex space park with premier frontage on heavily traveled Ashley Phosphate Road. I-26, and I-526 are just minutes away via Dorchester Road and allows quick access to Summerville, North Charleston, Downtown Charleston, or Mount Pleasant.
- * This highly visible location is suitable for an office warehouse operation, retail, small distribution center or a showroom.



SUMMIT

COMMERCIAL PROPERTIES

For more information call:

Lisa B. Safford or

James Mangano

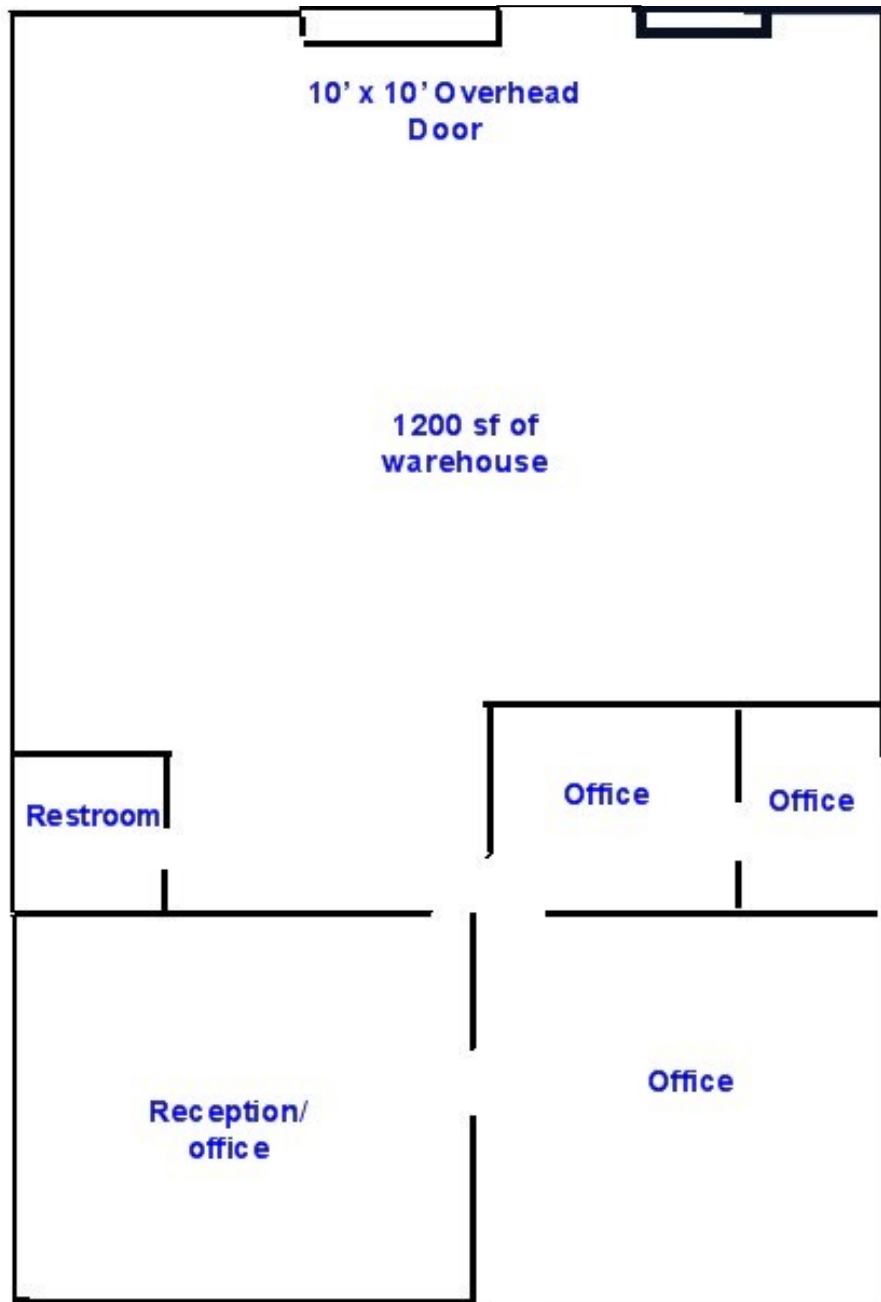
(843) 884-7773

LBSafford@comcast.net

www.SummitCommercialProperties.com

Information deemed accurate but not guaranteed. Information subject to change without notice

4048 Ashley Phosphate



SUMMIT

COMMERCIAL PROPERTIES

For more information call:

Lisa B. Safford or

James Mangano

(843) 884-7773

SummitCommercial@bellsouth.net

www.SummitCommercialProperties.com

Information deemed accurate but not guaranteed. Information subject to change without notice