



Professional Office For Lease



3255 Landmark Drive
North Charleston, SC 29418

- 3,491 sq Ft of Class A office space
- Located in a free standing, drive-up office building
- Building is sub-dividable into two suites
- Conveniently located just one mile from I-26 and within minutes of I-526.
- Ample on site parking
- Building signage available
- Suitable for medical or general office
- \$15.75/sf/yr . Landlord pays base year insurance and taxes. Tenant responsible for utilities.
- Additional building just completed. General Tenant upfit allowance.

SUMMIT COMMERCIAL PROPERTIES

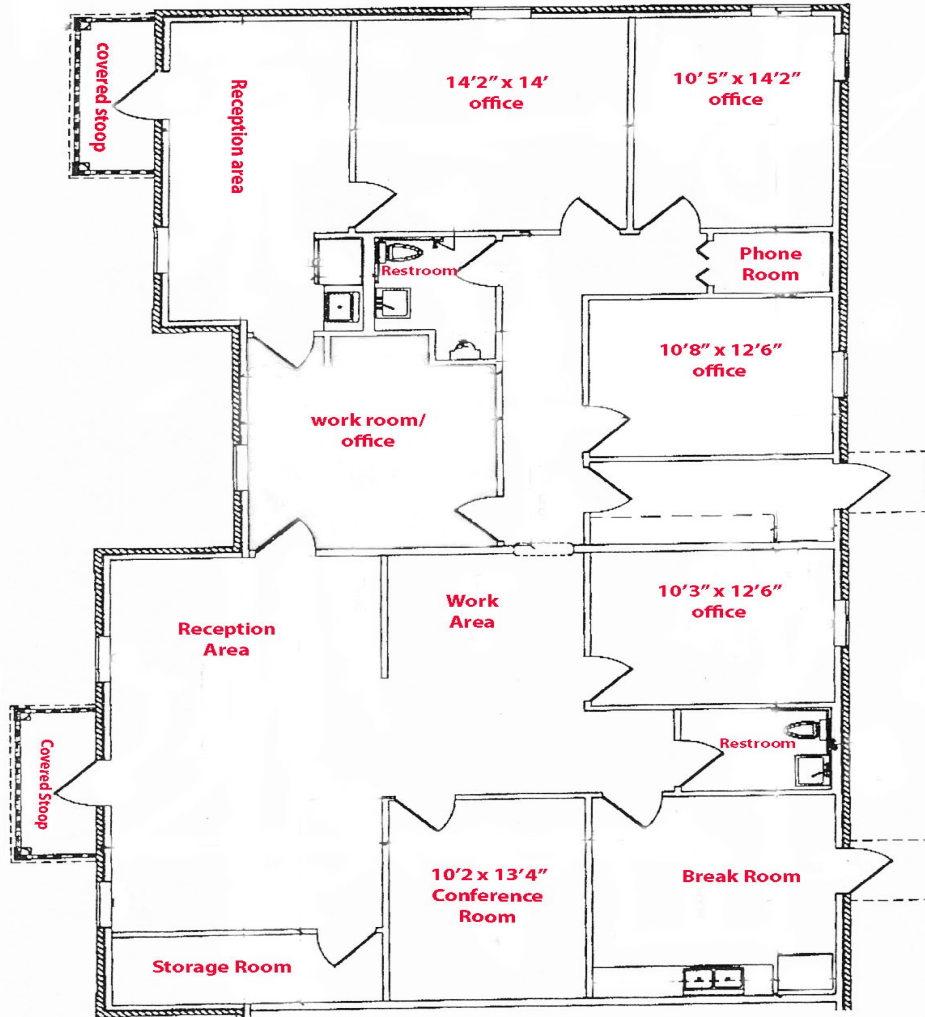


1537-B Ben Sawyer Blvd
Mt. Pleasant, SC 29464
Voice: (843) 884-7773

E-mail: lbsafford@comcast.net
www.SummitCommercialProperties.com



3255 Landmark Drive



SUMMIT COMMERCIAL PROPERTIES



1537-B Ben Sawyer Blvd

Mt. Pleasant, SC 29464

Voice: (843) 884-7773

E-mail: lbsafford@comcast.net

www.SummitCommercialProperties.com