

Service You Can Stand On

Bluff's edge of dockleveler is designed to have a working range of 5" above and 5" below dock. Because of gradability problems docklevelers are not recommended for use with pallet jacks or stackers.

EDGE OF DOCKLEVELER (EP)

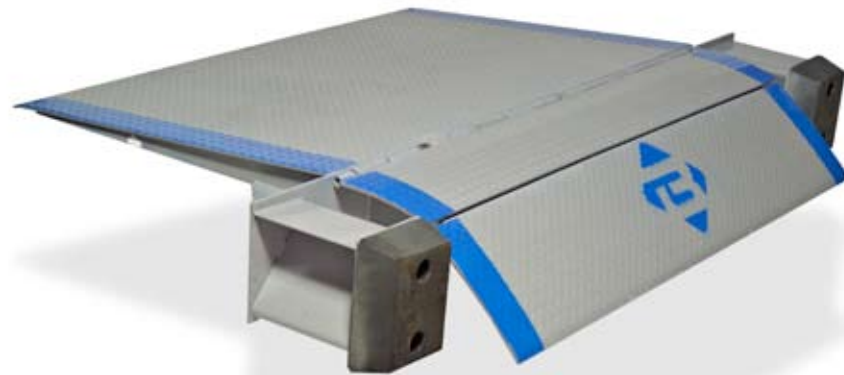
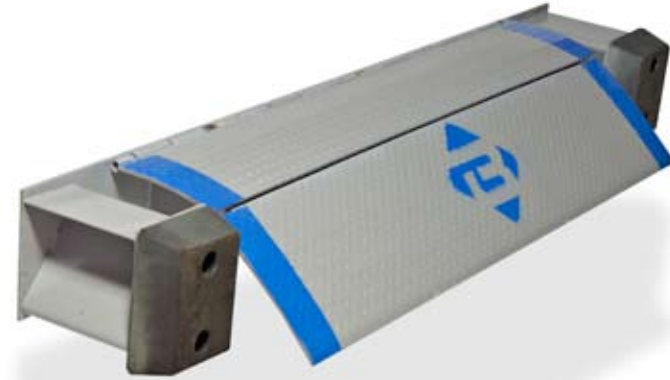
- Capacities from 20,000 to 25,000 pounds
- Automatically returns to stored position when truck leaves
- Self-storing handle
- Bumper and bumper blocks are included

Fast and easy to operate, Bluff's edge of dockleveler is positioned by lifting a self-storing handle and pulling the handle to the dock floor. The latch assembly activates the lip forward to the floor of the trailer as the handle is lifted. When released, the handle automatically returns to a stored position. The optimum dock height for conventional trailers is 51", while the proper dock height for refrigerated equipment is 55". Refrigerated lip is optional. Widths of 72" and 78" are available.

LO-DOCKLEVELER (LD)

- Raises edge-of-docklevelers to proper working height
- Completely assembled; no site welding required

Now without expensive dock alterations, you can raise the height of your present dock as much as 11". Lo-docklevelers can easily be installed on any concrete dock without welding or modifications. Refrigerated lip is optional. Complete technical information and installation instructions are available upon request.



FAST AND EASY OPERATION

STEEL AND ALUMINUM WHEELRISERS (SWR and AWR)

- Eliminate unsafe, below dock loading conditions
- Reduce damage to loading equipment
- Heights up to 12"

Wheelrisers allow trailers to be positioned properly above dock for more efficient loading. Widths of 18" and 24". Lengths to accommodate both single, dual, or tandem axle trailers. Wheelrisers can be portable or permanently positioned. Custom sizes are available.



STEEL



ALUMINUM



For over 25 years, Bluff Manufacturing has been recognized as the innovative leader when it comes to the fabrication and design of high quality dock and warehouse equipment. All products are built to the most rigid industry standards, providing customers with the greatest possible value.

- Nationwide dealer network
- Responsive customer service
- Stocking locations to provide quick delivery
- Regional support by knowledgeable sales staff
- Engineering support
- Short lead times on non-stocked products
- Custom designs for unique situations



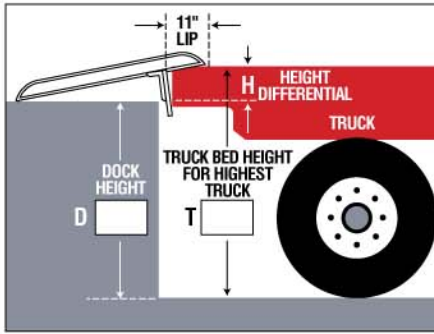
SELECTION GUIDE

Choosing the correct **SIZE** and **CAPACITY** of equipment helps improve your dock operation. The following guidelines will help you determine what equipment best suits your individual needs.

LENGTH

To determine the proper length of a dockboard/plate, three items are required:

- Dock height (D)
- Height of highest truck (T)
- Type of loading equipment used



HEIGHT DIFFERENTIAL

Highest Truck Height T

We recommend using 55" for the T unless your customer says otherwise, since 55" is the maximum height of most trailers. On refrigerated or container trailers use 59".

$$T = \text{[] Inches}$$

Dock Height D

(You must measure this.)

$$- D = \text{[] Inches}$$

Height Differential (Maximum) H

H is equal to T minus D.

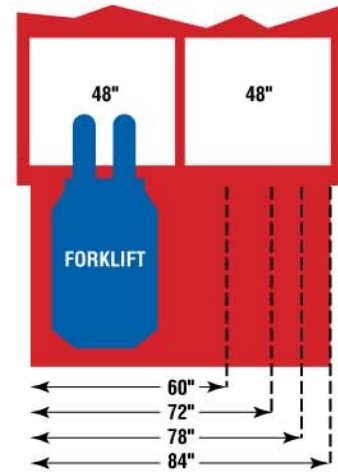
$$H = \text{[] Inches}$$

LENGTH CHART

Height	DOCKPLATE LENGTH		DOCKBOARD LENGTH	
	Pallet Jack	Propane Forklift	Electric Forklift	
3	36"			
5	48"	36"		
7	60"	36"	48"	
9		60"	84"	
11		72"	96"	
13		84"		
15		96"		

WIDTH

Bluff recommends a minimum product width of 12" to 18" wider than the overall width of the vehicle or pallet used. For improved end loading efficiency, you may consider increasing board width, as shown in diagram.



CAPACITY

- Stackers and other narrow aisle loaders should not be used on a dockboard.
- Paper roll clamp and multi-shift loading add 5,000 pounds to the board capacity.
- Capacity rated for single-shift operation at a 3 mile per hour maximum rate of travel.
- For all railboard applications, we require a fully completed railboard worksheet.

CAPACITY SELECTION CHART

3-Wheel Forklift	4-Wheel Forklift	Board Capacity
2,000 – 2,500		10,000
	2,000 – 3,000	10,000
3,000 – 3,500		15,000
4,000 – 5,000		20,000
	3,000 – 5,000	15,000
	5,000 – 6,000	20,000
Lifting Capacities		



YOUR BLUFF DEALER

Loading Dock Supply, LLC
7350 Ashley Rd
Ashley, OH 43003
1-877-845-5731

[Http://loadingdocksupply.com](http://loadingdocksupply.com)



U.S. Patents Nos. 4,689,846; 5,065,468.
©2005 Bluff Manufacturing, Inc.

Bluff Manufacturing reserves the right to make changes in specifications or designs consistent with product improvements.